



Shellfishing in Brewster

Provide opportunities for commercial aquaculture

Commercial aquaculture is a growing industry in the region. As of 2016 there were 249 licensed shellfish growers operating on Cape Cod cultivating 628.8 acres, primarily for oysters and quahogs.

The Town is in the process of updating regulations governing commercial shellfish aquaculture to ensure that aquaculture is allowed in a manner that protects fragile resources and avoid conflicts with other coastal activities.

Commercial Shellfishing Activities in Brewster

33 Commercial Shellfish License Holders

9 Shellfish Aquaculture Grants

19 Razor Clam Endorsements



Shellfish Aquaculture

9 Grants of varying size – leasing 9.5 total acres from the Town for \$25/acre per year

2013-2018 Commercial Oyster Landings (amounts in pieces)

- 2013 – 199,880
- 2014 – 276,089
- 2015 – 444,962
- 2016 – 358,980
- 2017 – 410,250
- 2018 – 420,732

Mants Landing Shellfish Grants



Breakwater Landing Shellfish Grants



Ellis Landing Shellfish Grants



Razor Clams

Razor clams have not been a commercially harvested species in Brewster.

At the request of local commercial fishermen, the Town launched a Commercial Razor Clam Harvest Pilot Project in 2018 to determine whether a regular commercial harvest can be sustained without undue stress on the resource and, if so, how such the fishery should be managed.

The initial pilot involved 11 licenses to Brewster commercial harvesters. Harvesting began in April and concluded in September, and provided only a few months of data. A second year Pilot is underway, running from April through December, to generate a full year of harvest data. Based on the data, decisions about future licensing of this fishery will be determined.

The 2nd year pilot program has 15 adult harvesters and 4 student harvesters

Razor Clam study

Brewster DNR has collaborated with the Marine Division from Barnstable County Cooperative Extension

Study is looking at:

- Impact of salting on sub-legal razor clams (less than 5")
- Impact of salting on legal (5" or greater)
- Size range
- Salt concentration used by harvesters
- Salt damage on gills of razor clams
- Measuring the salt in the holes (depth it travels, time to dissipate)

Razor Clam Study



Razor Clam Study



Recreational Shellfishing



Recreational harvesting is allowed:

In July and August the Town only allows shellfishing on Thursdays and Sundays, and stock an area off Saints Landing with quahogs.

In the fall (Sundays in October/November) the Town stocks an area for oyster harvest off Ellis Landing or Mants Landing. These seasonal programs are extremely popular with permit holding town residents and visitors.

From June 1 through September 30, recreational fishing area is closed east of Ellis Landing in the summer, and is being opened for limited commercial harvesting of razor clams under the pilot program.



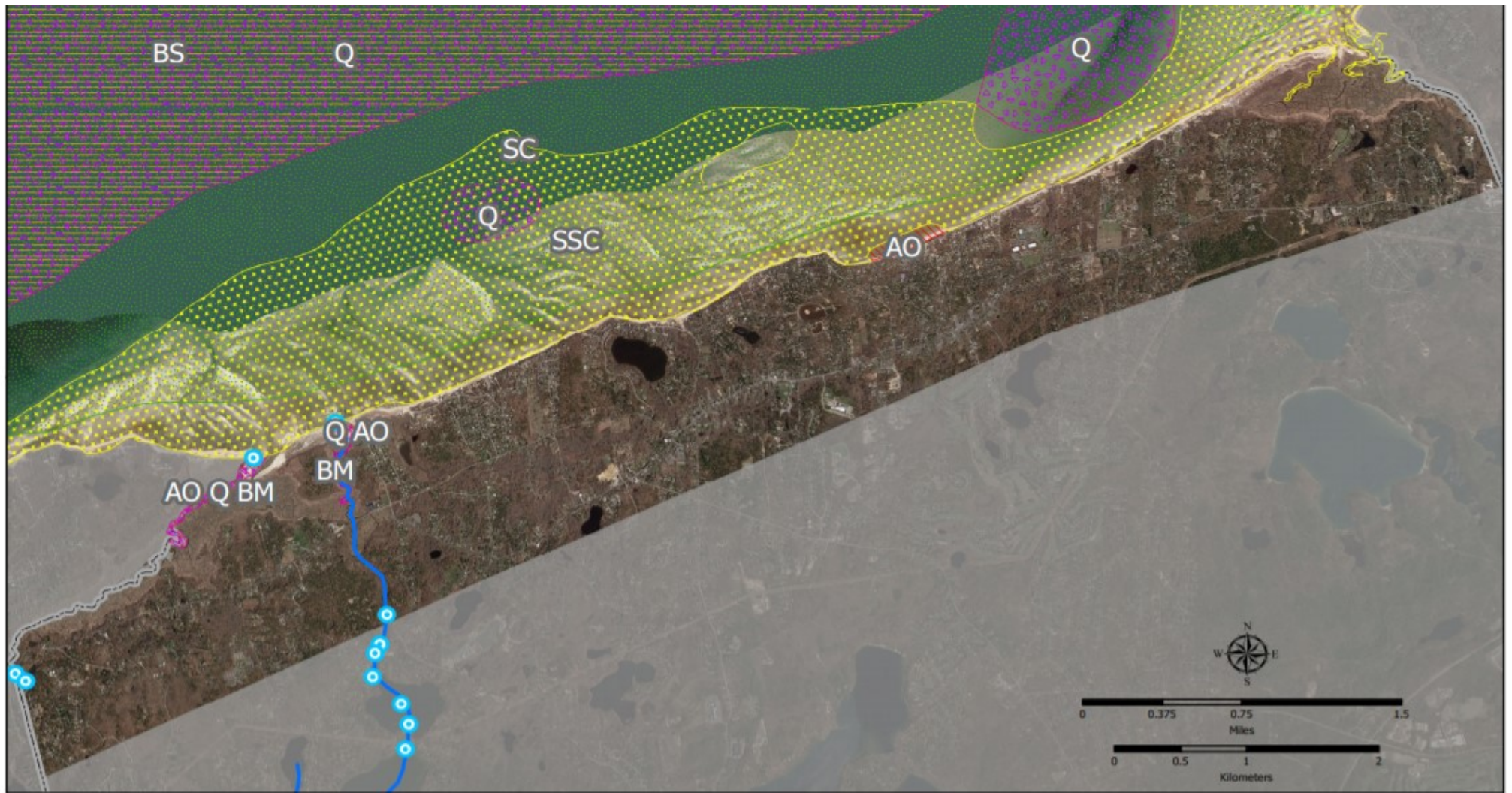
Recreational harvesting

The taking of shellfish from the rock piles seedbeds directly off of Ellis Landing and Ocean Edge is prohibited throughout the year.

Spring propagation events include an eight-day littleneck season off Ellis Landing. This is repeated in late September.

The immediate areas of Paine's Creek, Quivett Creek, Namskaket Creek are closed to the taking of shellfish due to contamination.





Brewster Coastal Resource Management Plan

Anadromous and Shellfish Resources

Shellfish Habitat

- American Oyster (AO)
- Bay Scallop (BS)
- Blue Mussel (BM)

Quahog (Q)

- Quahog (Q)
- Razor Clam (RC)
- Soft-shelled Clam (SSC)
- Surf Clam (SC)

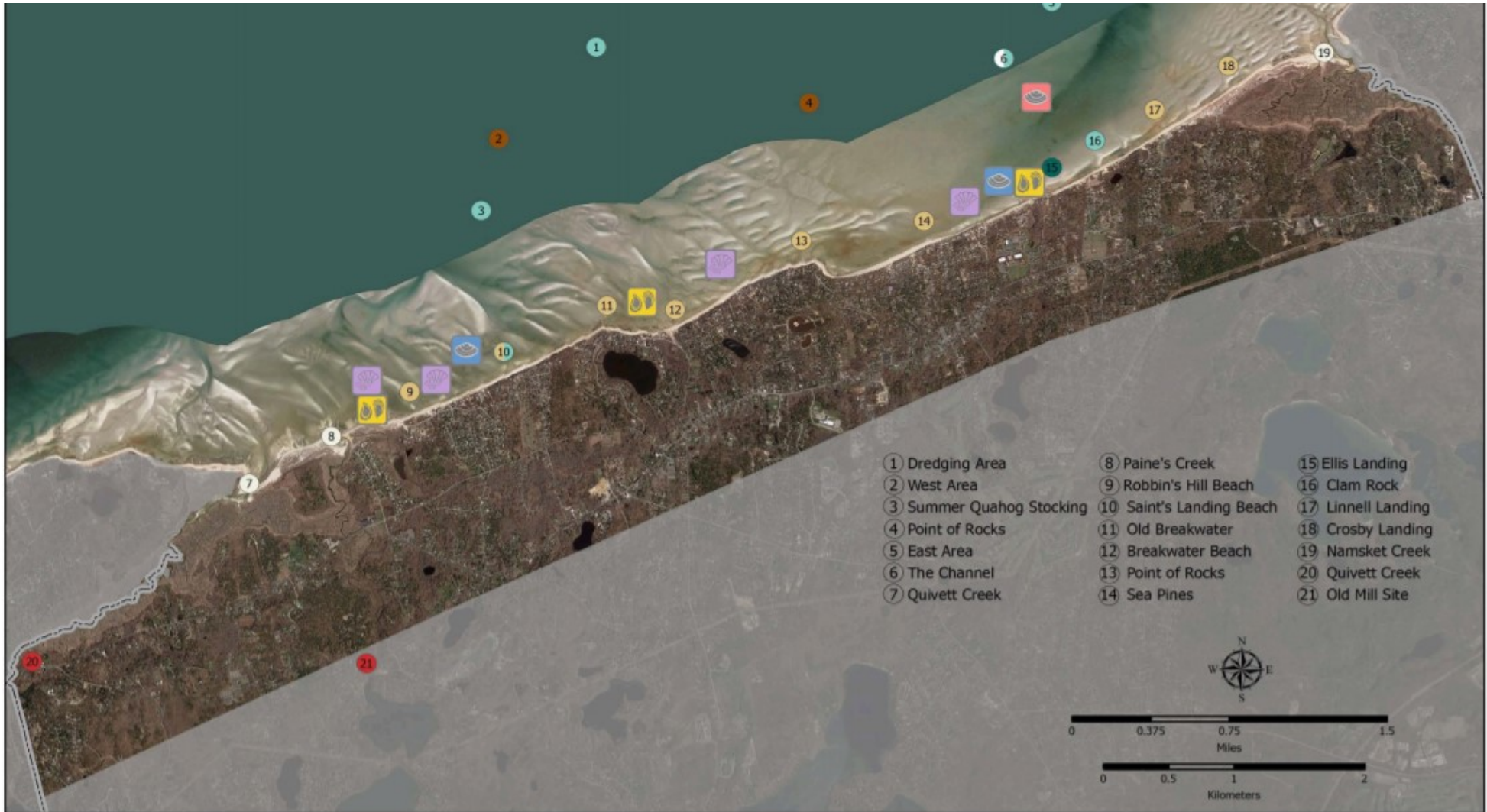
Anadromous Fish Habitat

- Anadromous fish presence
- Anadromous fish run

Areas outside study area



The information depicted on these maps is for planning purposes only. It is not adequate for legal boundary definition, regulatory interpretation, or parcel level analysis. It should not substitute for actual on-site survey, or supersede deed research.



Brewster Coastal Resource Management Plan

Water Dependent Activities




CAPE COD COMMISSION

Shellfish Activities

-  Recreational Shellfishing
-  Commercial Shellfishing
-  Public Propagation
-  Aquaculture Grant

Shellfish Beds and Fish Runs

-  Herring Run
-  Little Necks/Cherry Stones
-  Quahogs
-  Scallops/Quahogs
-  Sea Clams
-  Steamers
-  Winter Steamers/Summer Quahogs
-  Other

 Areas outside study area



The information depicted on these maps is for planning purposes only. It is not adequate for legal boundary definition, regulatory interpretation, or parcel level analysis. It should not substitute for actual on-site survey, or supersede deed research.

Questions ?

